



For Sale

Last Lot Available

Offering Price \$360,000

Frederick Preserve Industrial Park

Lot 5

9742 Dr. Perry Road
Ijamsville, MD 21754

Lot 5, 5.07 +/- Acres, SDAT 07-265620, L/F 3181/799
Map/Grid/Parcel; 105/17/31, Plat 86/100
Zoning: Frederick Co., Limited Industrial "LI"
Utilities: Well & Septic



For more information please contact:

Charles Seymour, President/Broker | 240-436-6040 | cseymour@tpreinc.com or Ted McCutcheon, Associate Broker | 301-964-3876 | tmccutcheon@tpreinc.com

8923 Fingerboard Road, Frederick, MD 21704 | TPCRE.com | Office 301 831 8232

While the information contained herein was obtained through sources deemed reliable it is not guaranteed as to its accuracy. All prospective purchasers are advised to make independent verification.

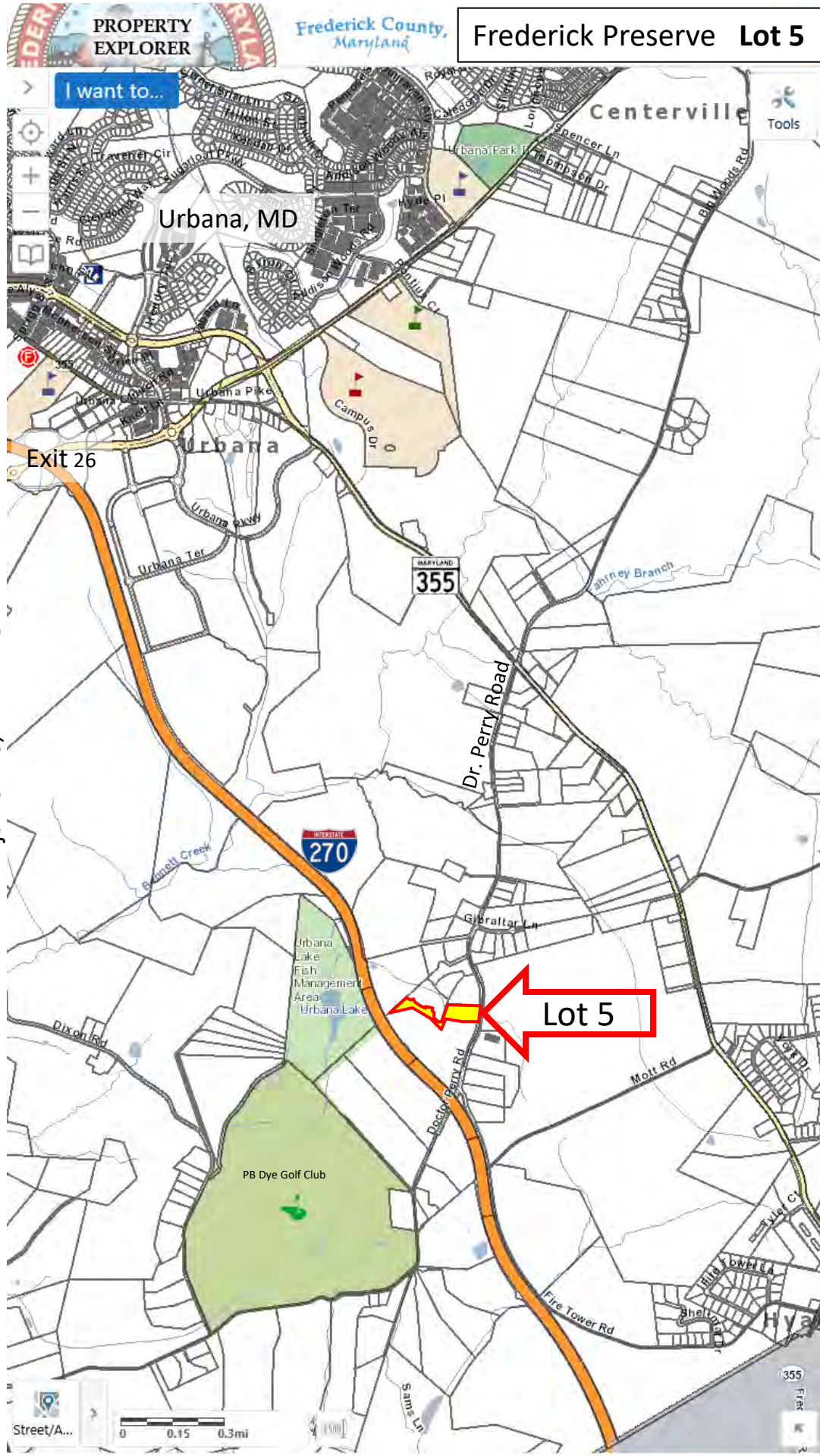
Frederick Preserve Industrial Park

Lot 5

9742 Dr. Perry Road
ijamsville, MD 21754



Lot 5, 5.07 +/- Acres, SDAT 07-265620, L/F 3181/799
Map/Grid/Parcel; 105/17/31, Plat 86/100
Zoning: Frederick Co., Limited Industrial "LI"
Utilities: Well & Septic



For more information please contact:

Charles Seymour, President/Broker | 240-436-6040 | cs Seymour@tpreinc.com or Ted McCutcheon, Associate Broker | 301-964-3876 | tmccutcheon@tpreinc.com

8923 Fingerboard Road, Frederick, MD 21704 | TPCRE.com | Office 301 831 8232

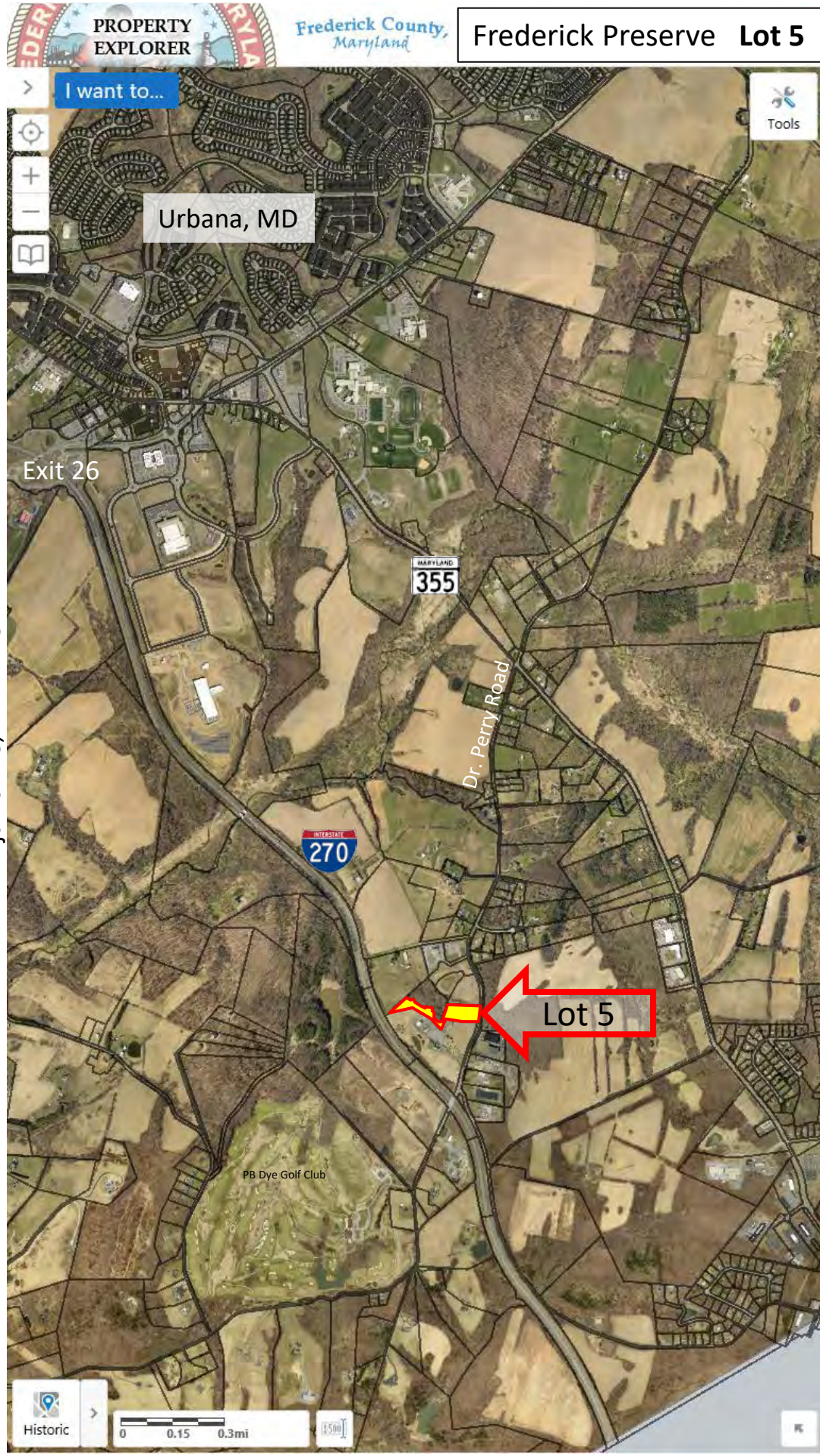
While the information contained herein was obtained through sources deemed reliable it is not guaranteed as to its accuracy. All prospective purchasers are advised to make independent verification.

Frederick Preserve Industrial Park

Lot 5
9742 Dr. Perry Road
ijamsville, MD 21754



Lot 5, 5.07 +/- Acres, SDAT 07-265620, L/F 3181/799
Map/Grid/Parcel; 105/17/31, Plat 86/100
Zoning: Frederick Co., Limited Industrial "LI"
Utilities: Well & Septic



For more information please contact:

Charles Seymour, President/Broker | 240-436-6040 | cseymour@tpreinc.com or Ted McCutcheon, Associate Broker | 301-964-3876 | tmccutcheon@tpreinc.com
8923 Fingerboard Road, Frederick, MD 21704 | TPCRE.com | Office 301 831 8232
While the information contained herein was obtained through sources deemed reliable it is not guaranteed as to its accuracy. All prospective purchasers are advised to make independent verification.



Frederick Preserve Industrial Park

Lot 5

9742 Dr. Perry Road
ljamsville, MD 21754

Lot 5, 5.07 +/- Acres, SDAT 07-265620, L/F 3181/799
Map/Grid/Parcel; 105/17/31, Plat 86/100
Zoning: Frederick Co., Limited Industrial "LI"
Utilities: Well & Septic



For more information please contact:

Charles Seymour, President/Broker | 240-436-6040 | cseymour@tpreinc.com or Ted McCutcheon, Associate Broker | 301-964-3876 | tmccutcheon@tpreinc.com
8923 Fingerboard Road, Frederick, MD 21704 | TPCRE.com | Office 301 831 8232

While the information contained herein was obtained through sources deemed reliable it is not guaranteed as to its accuracy. All prospective purchasers are advised to make independent verification.



Aerial

Frederick Preserve Industrial Park

Lot 5

9742 Dr. Perry Road
Ijamsville, MD 21754

Lot 5, 5.07 +/- Acres, SDAT 07-265620, L/F 3181/799
Map/Grid/Parcel; 105/17/31, Plat 86/100
Zoning: Frederick Co., Limited Industrial "LI"
Utilities: Well & Septic



Frederick County,
Maryland

Search...



For more information please contact:

Charles Seymour, President/Broker | 240-436-6040 | cseymour@tpreinc.com or Ted McCutcheon, Associate Broker | 301-964-3876 | tmccutcheon@tpreinc.com

8923 Fingerboard Road, Frederick, MD 21704 | TPCRE.com | Office 301 831 8232

While the information contained herein was obtained through sources deemed reliable it is not guaranteed as to its accuracy. All prospective purchasers are advised to make independent verification.



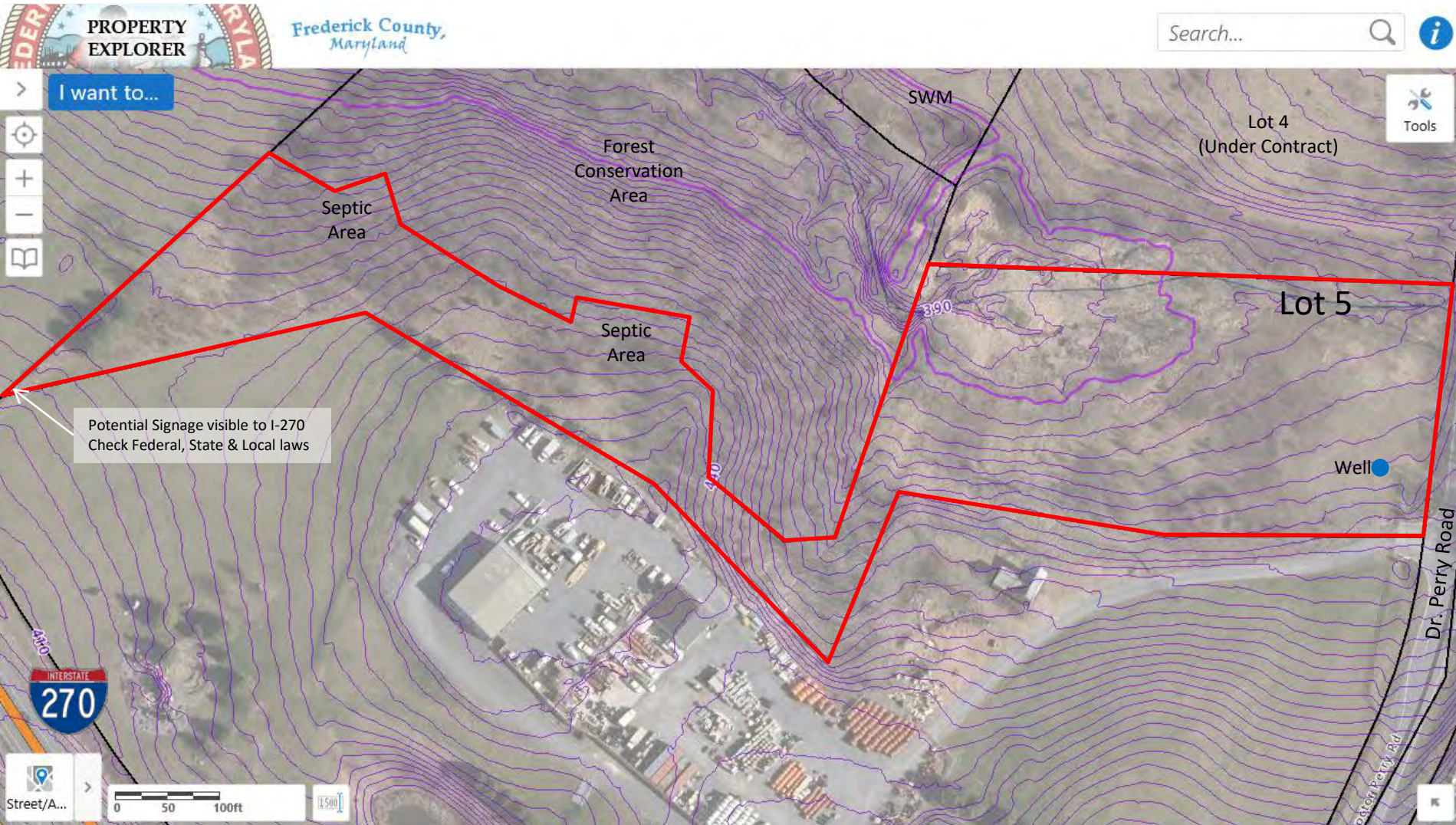
2' Contours

Frederick Preserve Industrial Park

Lot 5

9742 Dr. Perry Road
Ijamsville, MD 21754

Lot 5, 5.07 +/- Acres, SDAT 07-265620, L/F 3181/799
Map/Grid/Parcel; 105/17/31, Plat 86/100
Zoning: Frederick Co., Limited Industrial "LI"
Utilities: Well & Septic

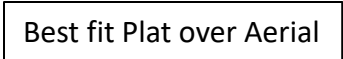


For more information please contact:

Charles Seymour, President/Broker | 240-436-6040 | cseymour@tpreinc.com or Ted McCutcheon, Associate Broker | 301-964-3876 | tmccutcheon@tpreinc.com

8923 Fingerboard Road, Frederick, MD 21704 | TPCRE.com | Office 301 831 8232

While the information contained herein was obtained through sources deemed reliable it is not guaranteed as to its accuracy. All prospective purchasers are advised to make independent verification.



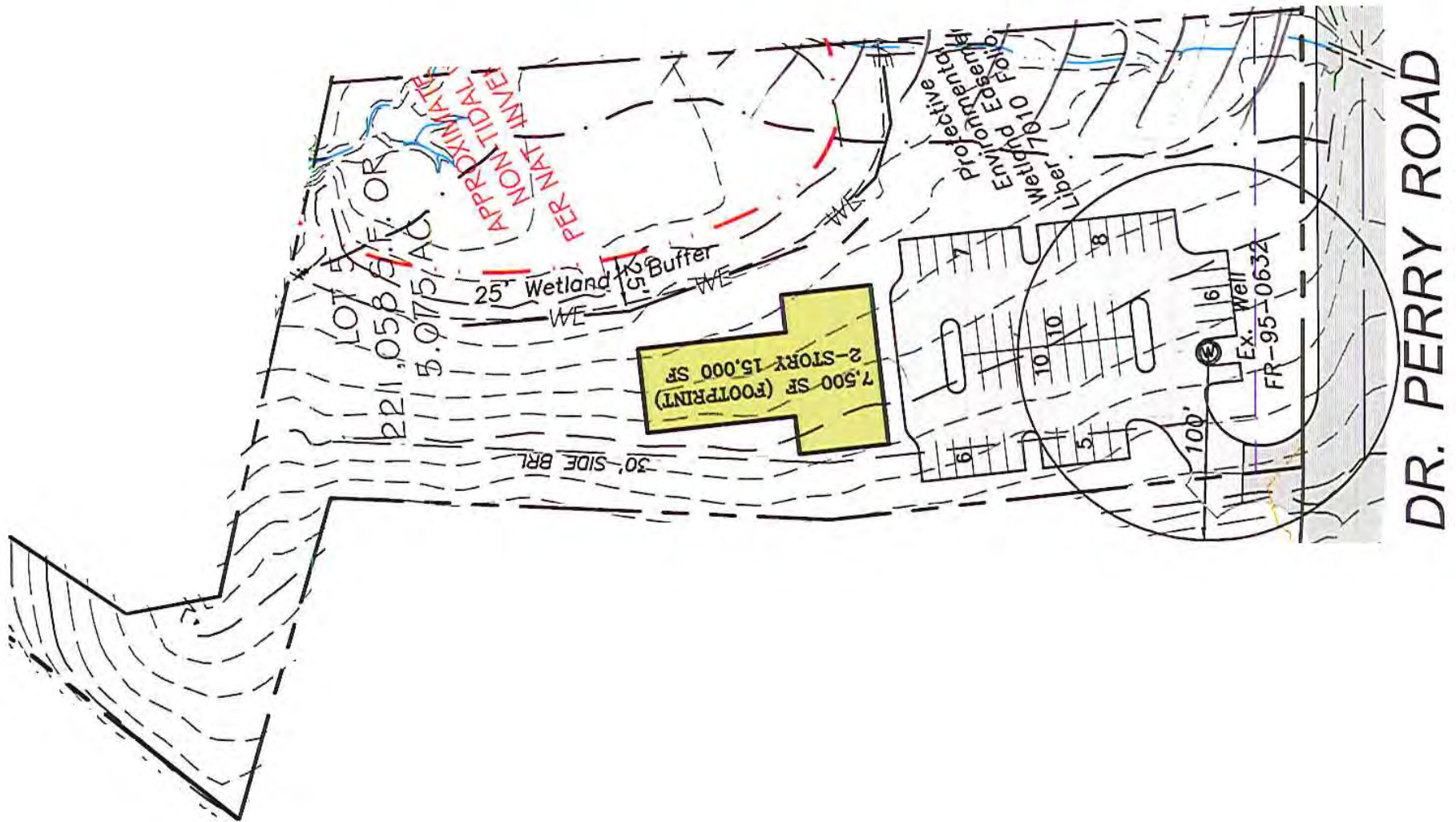
For more information please contact:
Charles Seymour, President/Broker | 240-436-6040 | cseymour@tpreinc.com or Ted McCutcheon, Associate Broker | 301-964-3876 | tmccutcheon@tpreinc.com
8923 Fingerboard Road, Frederick, MD 21704 | TPCRE.com | Office 301 831 8232
While the information contained herein was obtained through sources deemed reliable it is not guaranteed as to its accuracy. All prospective purchasers are advised to make independent verification.



Building Concept
7,500 sf footprint
15,000 total sf

Frederick Preserve Industrial Park
Lot 5
9742 Dr. Perry Road
Ijamsville, MD 21754

Lot 5, 5.07 +/- Acres, SDAT 07-265620, L/F 3181/799
Map/Grid/Parcel; 105/17/31, Plat 86/100
Zoning: Frederick Co., Limited Industrial "LI"
Utilities: Well & Septic



For more information please contact:
Charles Seymour, President/Broker | 240-436-6040 | cseymour@tpreinc.com or Ted McCutcheon, Associate Broker | 301-964-3876 | tmccutcheon@tpreinc.com
8923 Fingerboard Road, Frederick, MD 21704 | TPCRE.com | Office 301 831 8232
While the information contained herein was obtained through sources deemed reliable it is not guaranteed as to its accuracy. All prospective purchasers are advised to make independent verification.