

# LEASE

Frederick, Maryland

# OFFICES, OUTBUILDINGS & SECURED YARD SPACE

5304 Kings Court, Frederick Maryland 21703

## LEASE ALL OR SUBDIVIDE

### C - Outbuilding 6,000 SF (+/-)

- Dry Storage Outbuilding with 2 Large sliding doors, 3 large bays.

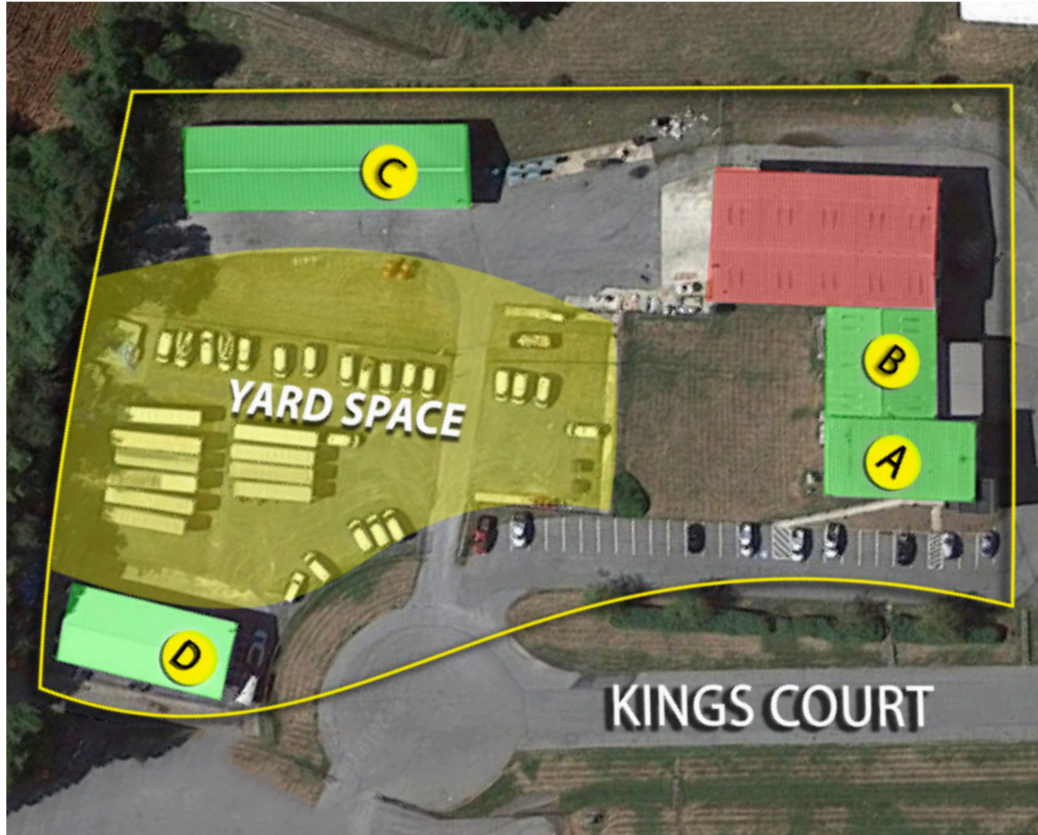
C



### D - Outbuilding 2,700 SF (+/-)

- Dry Storage Outbuilding

D



### First Floor Office Building:

A - 2,930 SF (+/-)

B - 3,391 SF (+/-)

A+B - 6,321 SF (+/-)



**YARD SPACE:** Fenced Yard Space - 1.5 Acres (+/-)

**ZONING:** General Commercial

**LEASE PRICE:** Negotiable



Charles Seymour, Broker | 240-436-6040 Phone | cseymour@tpreinc.com

www.TPCRE.com

Turning Point Commercial Real Estate. LLC | 8923 Fingerboard Road, Frederick, Maryland 21704 | 301 831 8232 Office

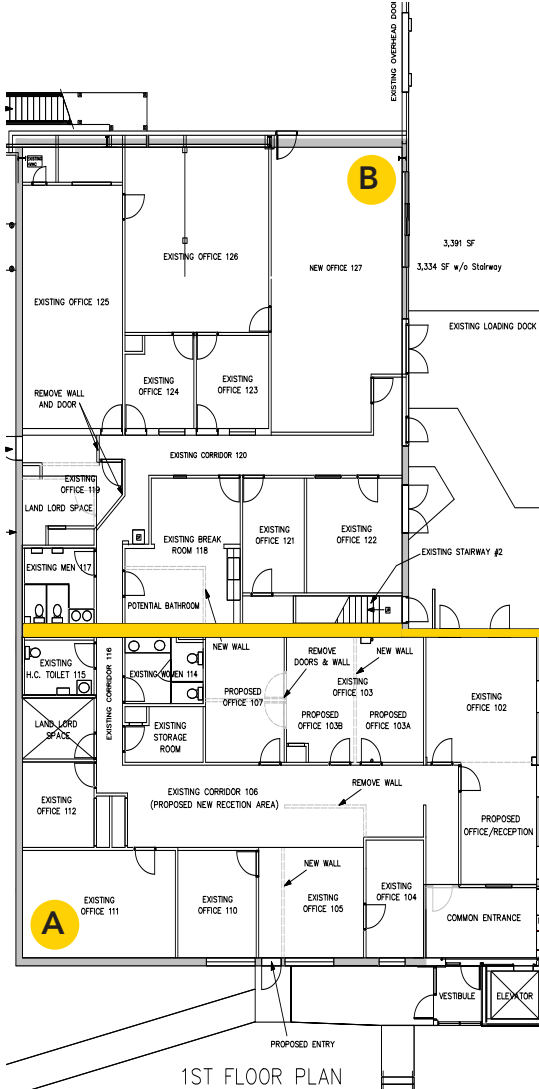
Information is believed to be accurate, but should not be relied upon without verification.

# LEASE

Frederick, Maryland

# FLOOR PLAN~TWO OFFICES A/B OR COMBINED

5304 Kings Court, Frederick Maryland 21703



Information is believed to be accurate, but should not be relied upon without verification.



Charles Seymour, Principal | 240-436-6040 Phone | cseymour@tpreinc.com

www.TPCRE.com

Turning Point Commercial Real Estate, LLC | 8923 Fingerboard Road, Frederick, Maryland 21704 | 301 831 8232 Office

# LEASE

Frederick, Maryland

# OUTBUILDINGS & SECURED YARD SPACE

5304 Kings Court, Frederick Maryland 21703



Fenced Yard Space (Total Area) 1.87 Acres

**C - Outbuilding 6,000 SF (+/-)**

- Dry Storage Outbuilding with 2 Large sliding doors, 3 large bays.

**D - Outbuilding 2,700 SF (+/-)**

- Dry Storage Outbuilding



# LEASE

Frederick, Maryland

# INDUSTRIAL OFFICES, OUTBUILDINGS & YARD SPACE

5304 Kings Court, Frederick Maryland 21703



## About Turning Point Real Estate

Our comprehensive full service approach to commercial real estate provides resourceful solutions in today's rapidly evolving market. Developing creative solutions and strategies to address the specific objectives and goals for our clients are what sets us apart. We're known for getting deals done and continuously raising the bar on service, professionalism, and performance.

We are a Maryland-based commercial real estate firm serving the Greater Washington Metropolitan Region including Maryland, Pennsylvania, Virginia, West Virginia, and the District of Columbia.

Visit us on the web at [TurningPointCommercial.com](http://TurningPointCommercial.com)

## For more information, please contact:

**Charles Seymour**, Broker

240 436 6040 Phone | [charlie@turningpointcommercial.com](mailto:charlie@turningpointcommercial.com)

8923 Fingerboard Road, Frederick, Maryland 21704

301 831 8232 Office | 301 831 8993 Fax

