

Ground Floor Plan
 1/8" = 1'-0"

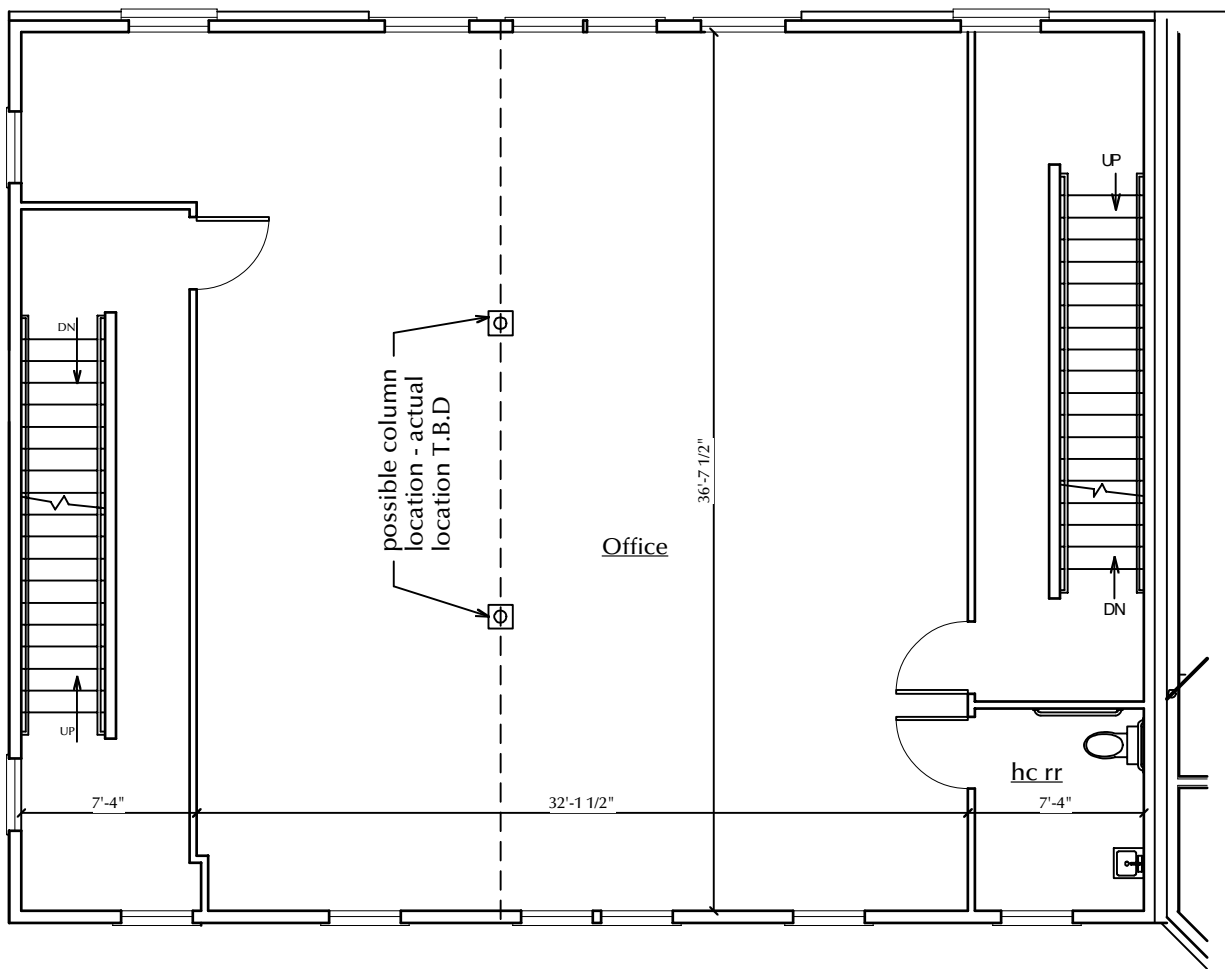
Gross SF	1824 sf
Retail Area	1256 sf

AITKEN - SADLIK
 ARCHITECTS
 15889 Crabbs Branch Way
 Rockville Maryland 20855
 301-670-5616 fax 301-670-5617

Parkwood Homes
 Mixed Use Combined

10-31-19

19-002



Second Floor Plan

1/8" = 1'-0"

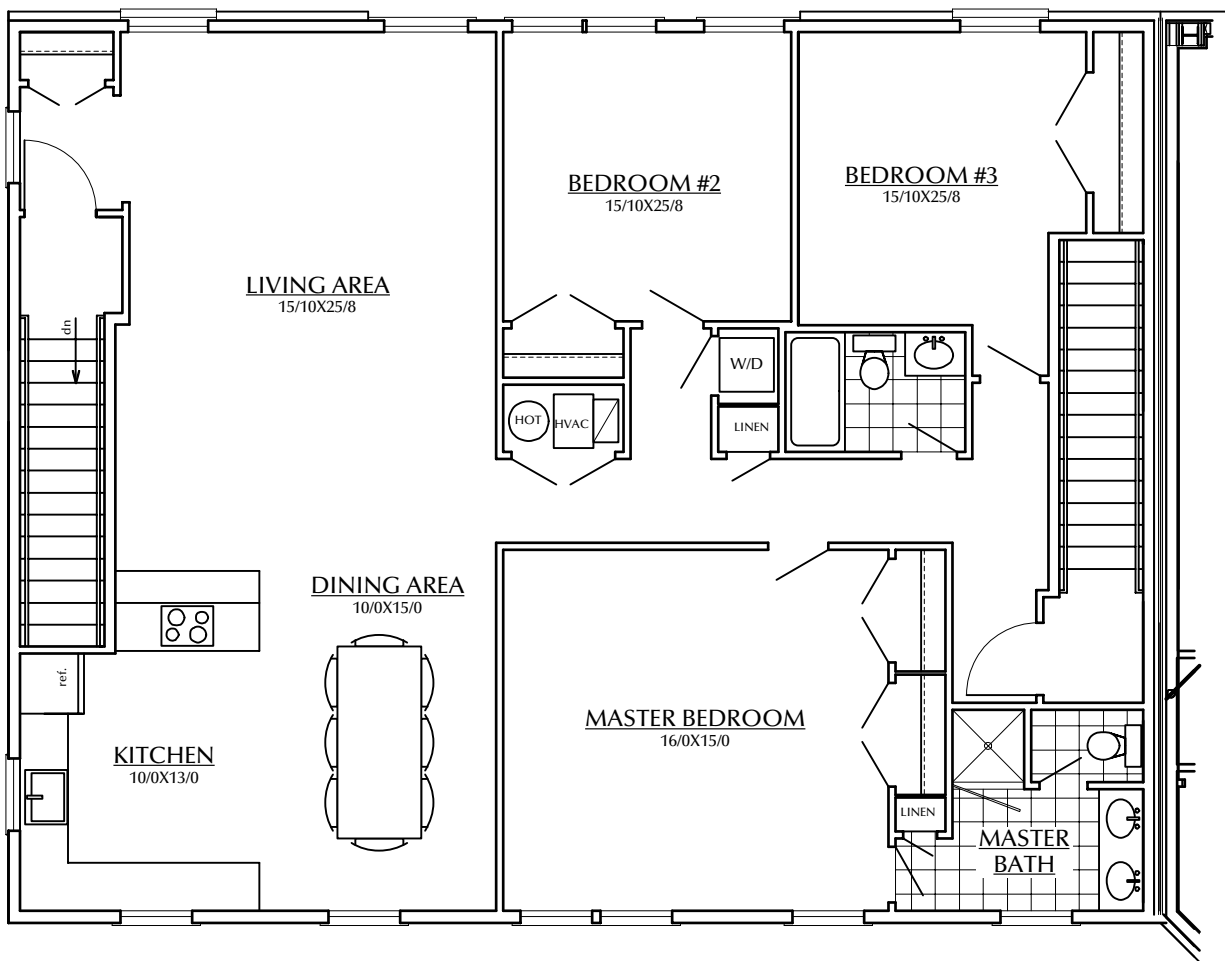
Gross SF 1824 sf
Office Area 1228 sf

AITKEN - SADLIK
ARCHITECTS
15889 Crabbs Branch Way
Rockville Maryland 20855
301-670-5616 fax 301-670-5617

Parkwood Homes
Mixed Use Combined

10-31-19

19-002



Third Floor Plan

1/8" = 1'-0"

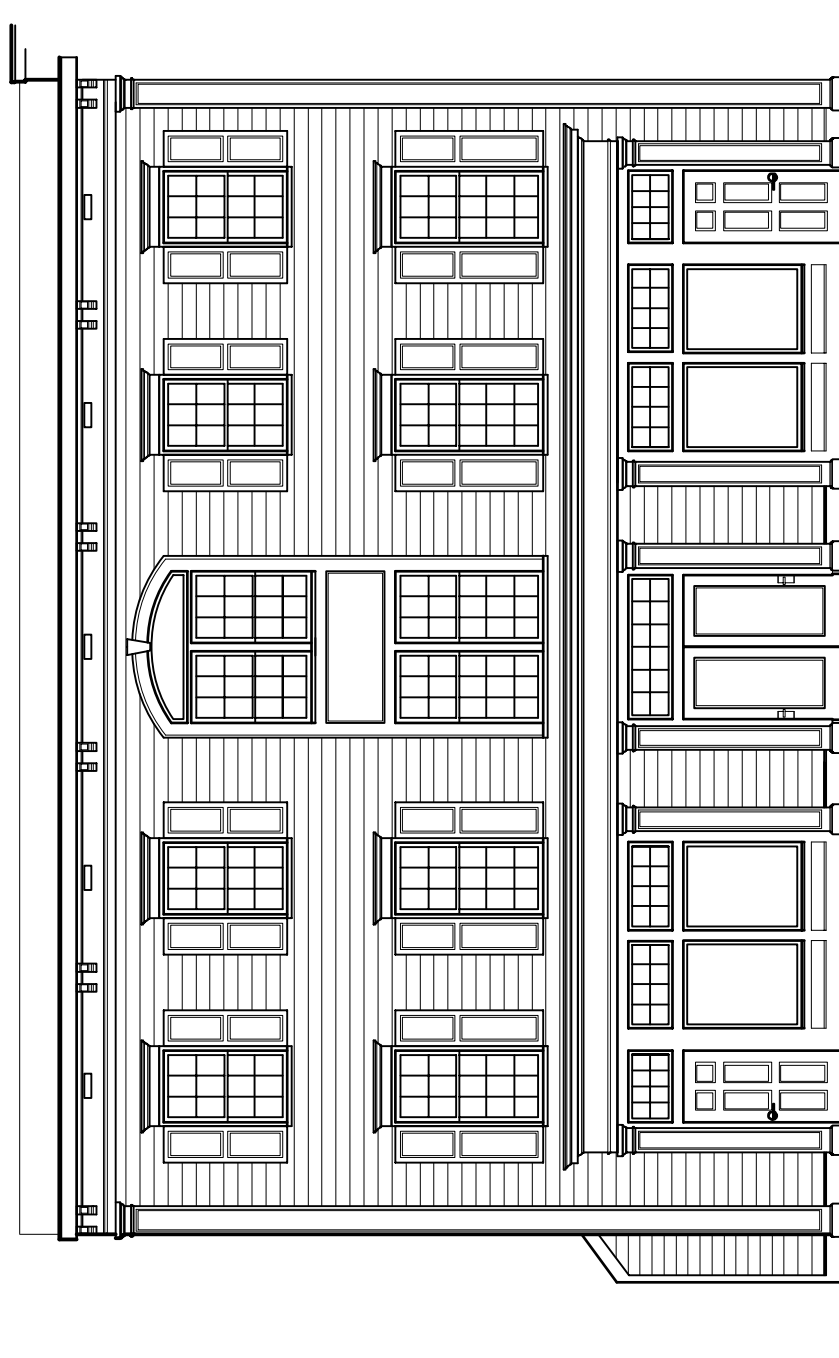
Gross SF	1824 sf
Apartment Area	1556 sf

AITKEN - SADLIK
ARCHITECTS
 15889 Crabbs Branch Way
 Rockville Maryland 20855
 301-670-5616 fax 301-670-5617

Parkwood Homes
 Mixed Use Combined

10-31-19

19-002



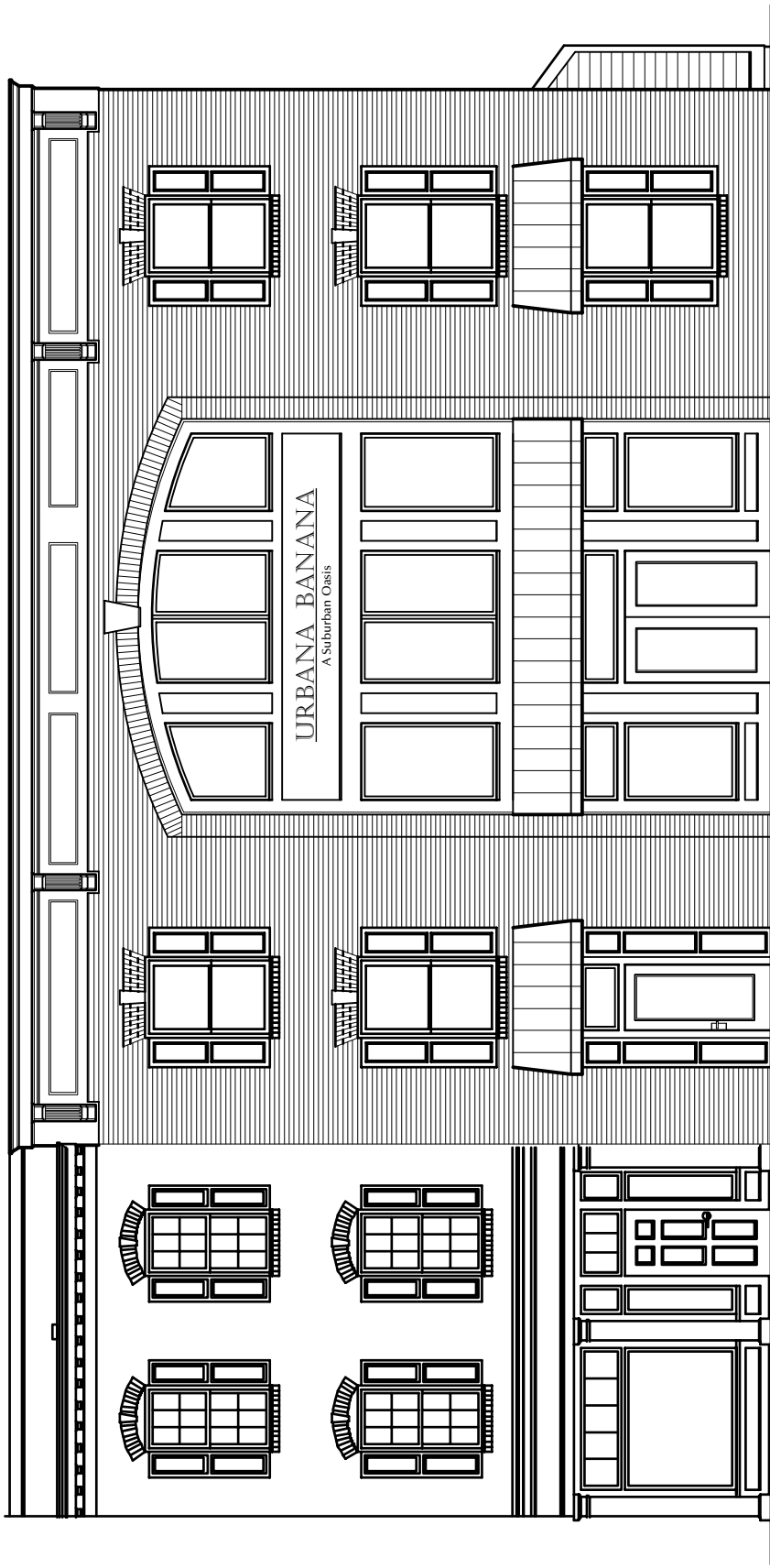
Courtyard Elevation
1/8" = 1'-0"

AITKEN - SADLIK
ARCHITECTS
15889 Crabbs Branch Way
Rockville Maryland 20855
301-670-5616 fax 301-670-5617

Parkwood Homes
Mixed Use Combined

10-31-19

19-002



Street Elevation
1/8" = 1'-0"